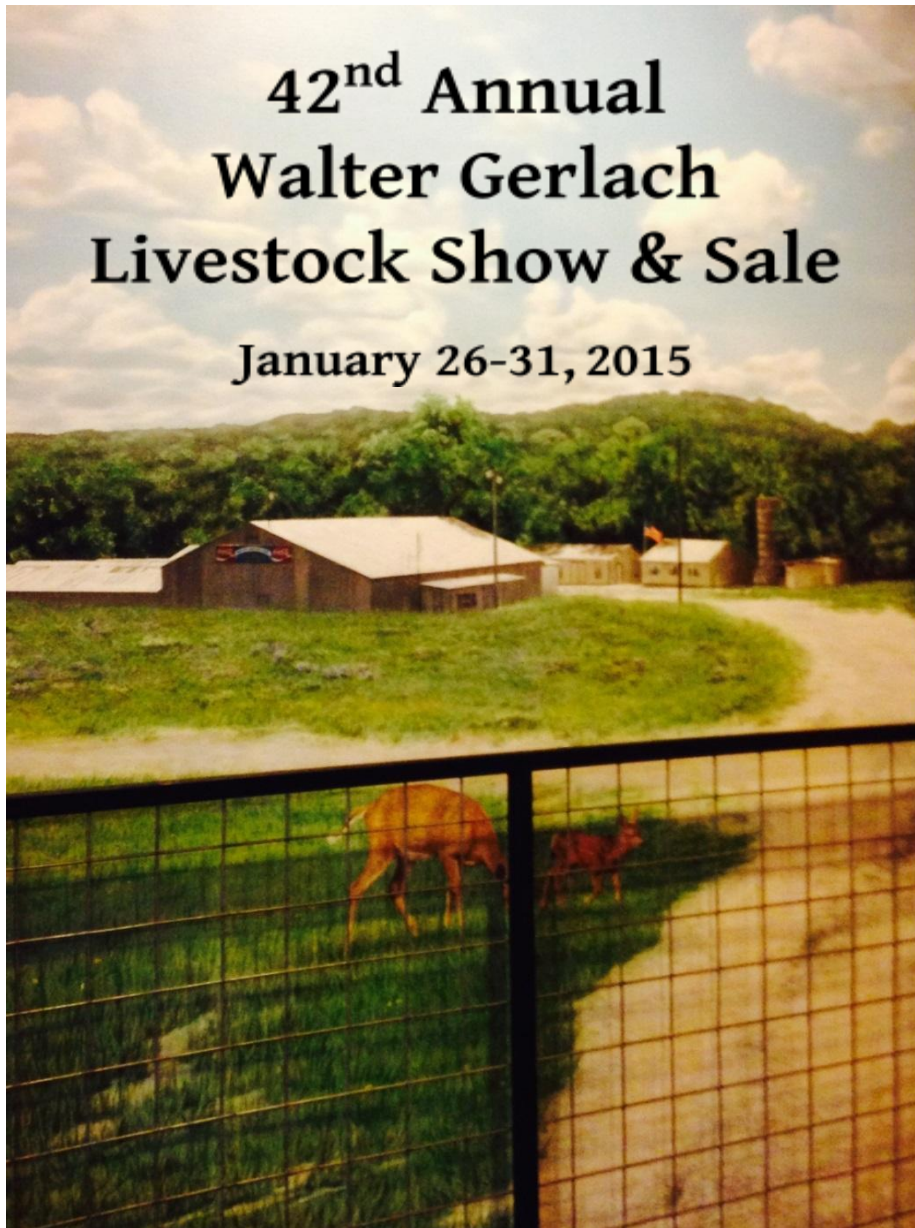


# **42<sup>nd</sup> Annual Walter Gerlach Livestock Show & Sale**

**January 26-31, 2015**



**2014 Total Sales: \$708,405**

**Cumulative Total Sales Since Show  
Inception:**

**\$12,757,923**

# PLANT INTERSCAPES

is proud to celebrate the

**42<sup>ND</sup> ANNUAL**  
**WALTER GERLACH JR. LIVESTOCK SHOW**



Plant Interscapes brings you only the freshest and most attractive plants, arrangements and containers. We specialize in:

- Interiorscapes
- Patioscapes
- Seasonscapes

*We're here to make you look great!*



**Plant  
Interscapes**  
PLANTS&PEOPLE

HOME OF THE  
**PRE-OWNED PLANT SALE**  
First Saturday of every month  
**9-3PM**

6436 Babcock Road | San Antonio, TX 78249  
210-696-4003 | [www.plantinterscapes.com](http://www.plantinterscapes.com)

IMPROVING LIFE & BUSINESS BY ENHANCING ENVIRONMENTS

## PRESIDENT'S LETTER

Welcome to the 42<sup>nd</sup> Annual Walter Gerlach Livestock Show and Sale. On behalf of the Board of Directors, I wish to extend everyone an invitation to come out and enjoy the "Best Little Show in Texas".

As President, I want to thank all those involved who give so much of their time and assets throughout the year and especially during the show. To the Ag teachers, club managers and parents working with the children, volunteers who work together behind the scenes and the supporters who contribute - your unending dedication and support are a continuing testimonial to the belief that children learn by example.

The show's continued success proves 41 years' worth of time well spent. Many families are in their 2<sup>nd</sup> and 3<sup>rd</sup> generation of participation in our stock show. Stock show projects are just tools that provide opportunities to spend time with our youth and to share in their successes and failures. Those opportunities, the time, memories, teamwork and companionship are the real treasures we seek. So have fun and enjoy the show.

Ernie De Winne  
President, O'Connor FFA Booster Club



## O'CONNOR AGRICULTURE TEACHERS

- Steve Chumbley, Agriculture Program Director
- Paul Booth
- Steve Branecky
- Bryan Hawkins
- Wes McFarland
- Mike Tondre
- Chase Carroll
- Scott Maytum, Farm Manager

## OFFICERS & DIRECTORS

### OFFICERS:

- President: Ernie De Winne
- 1st Vice-President: Robert Stricklin
- 2nd Vice-President: Nathan Lutz
- Treasurer: Leslie Schott
- Rec. Secretary: Judy Flores
- Corres. Secretary: Willie Frantzen

### DIRECTORS:

- Michael Brown
- Jerry Montalbo
- Tim Horny
- Ronnie Schuh
- Harold (Butch) Galm
- Robert Sandera
- Gary Schott
- Gordon Willms
- Randy Harmon

### DIRECTORS AT LARGE:

- Mary Bass
- Ben Bendele
- David Kilgore
- Joey Tomlinson

### HONORARY DIRECTOR:

- Johnny Mayfield

- Dr. Edmund Meier



# Over 15 Years of Support!



**FREE**  
**COMPLETE &**  
**EXAM &**  
**NECESSARY X-RAYS**  
expires 4/30/2015



## Good Luck!

To all the Walter Gerlach  
2015 Livestock Show Participants!

W Dental Group  
7614 Culebra Rd. Suite 103  
San Antonio, TX. 78251

**210.523.0000**  
at the corner of  
Ingram & Culebra

## **42nd ANNUAL WALTER GERLACH STOCK SHOW DEDICATION**

### **Harold (“Butch”) and Cindy Galm**

On behalf of the Board of Directors, it is with great pride that we dedicate our 42<sup>nd</sup> Anniversary show to Harold (“Butch”) and Cindy Galm. Butch and Cindy exemplify the true spirit of “Living to Serve” which is the foundation of the 4-H and FFA programs in our community. They have been involved with our stock show for over 20 years. Throughout these years they have served with distinction and integrity.

Over the past two decades, Butch has served the WGLS in various capacities including: President, Vice-President, Former Livestock Chairman, Scholarship Chairman and Auction Chairman. Cindy started her tenure with the show as a parent leader in the 4-H club. She has been a long time member of the Auction committee, a former Co-Chair of the Hospitality committee, Co-Chair of the Benefit Auction and has served on numerous livestock committees with our show.



Although Butch and Cindy’s daughter, Kari, graduated several years ago, this couple continues to serve the young people in our community. They both have been very generous to our kids in the Auction and continue to share their time, leadership and work ethic with our organization. Their dedication to the WGLS and the students we serve is a true example of their high character and unwavering belief in community service. It is indeed an honor for the WGLS Board of Directors to bestow this year’s dedication to such worthy volunteers.

Steve Chumbley  
Agriculture Program Director – NISD  
Ex-Officio, Walter Gerlach Livestock Show

### **2014 TOP BUYERS**

3 C POSSE  
FRANKLIN CONSTRUCTION, LTD.  
HEB  
HOLMES FFA ALUMNI  
DEWINNE EQUIPMENT CO.  
JOERIS GENERAL CONTRACTORS  
GARY & ROBBIE HABY  
THE GRASS IS GREENER LANDSCAPE, INC.  
ACW SERVICES  
INTECH SOUTHWEST SERVICES  
MAVERICK OF TEXAS CONSTRUCTION  
BARTLETT COCKE GENERAL CONTRACTORS

CRAWFORD ELECTRIC SUPPLY, INC.  
BOONE LOGAN  
RUDY’S COUNTRY STORE & BBQ  
WAL-MART  
FROST BANK  
TIM & CHRISTY LOUTON  
DIAMOND MANAGEMENT  
CUDE ENGINEERS LLC  
VULCAN MATERIALS  
ZUMWALT CONSTRUCTION  
PBK ARCHITECTS  
WISE OAKS LTD. / HUGO GUTIERREZ  
VALERO

# Good Luck To All FFA and 4-H Participants



**GALM  
REAL ESTATE**

**A Family of FFA & 4-H  
Participants...  
Past and Future...**



Harold "Butch" Galm, Broker  
Kari "Galm" Mulle, New Agent  
[www.galmrealestate.net](http://www.galmrealestate.net)

Residential \* Small Acreage\*  
Farm & Ranch \* Commercial

P.O. Box 319  
Helotes, TX 78023  
210-688-3874

**WALTER GERLACH GREATER NORTHWEST  
LIVESTOCK SHOW AND SALE  
2015  
(Invitational)**

- **SATURDAY– JANUARY 24, 2015**

**GERLACH STOCK SHOW KICK-OFF DANCE**

Location TBD

7:30pm – 12:00am

- **MONDAY – JANUARY 26<sup>th</sup> Arrival time and weigh-in**

Broiler Arrival	8:00am – 9:30am
Turkey Arrival	8:00am - 9:00am
Judging of Poultry	10:00am
Rabbit Arrival	2:00pm – 4:00pm
Judging of Rabbits	4:00pm
Lamb Arrival	4:00pm – 5:00pm
Goat Arrival	5:00pm – 6:30pm

- **TUESDAY – JANUARY 27<sup>th</sup> Arrival time and weigh-in**

Judging of goats, commercial, open to follow	8:00am
Judging of lambs, commercial, open to follow	11:00am (or 30 minutes following Goat show)
AG Mechanics Arrival	4:00pm – 6:00pm
Steer Arrival	5:00pm – 6:00pm

- **WEDNESDAY – JANUARY 28<sup>th</sup> Arrival time and weigh-in**

Swine Arrival	7:30am – 11:30am
Judging of Ag Mechanics Projects	12:30pm
Judging of Steers	5:00pm

- **THURSDAY – JANUARY 29<sup>th</sup>**

Judging of swine, commercial, open to follow	8:00am
Closing Ceremonies	5:00pm

- **FRIDAY – JANUARY 30<sup>th</sup>**

Judging Contest	10:00am
-----------------	---------

- **SATURDAY – JANUARY 31<sup>st</sup>**

Auction Opening Ceremonies	10:30am
Auction of Champions	11:00am



# *Good Luck Exhibitors*

---

  
AIR CONDITIONING & HEATING, L.L.C.

**695-3016**

**TACL #A011038E**

**Matt and Jennifer Burkholder**

***Proud Supporters of the  
Walter Gerlach Livestock Show & Sale  
Since 1992***

## IN APPRECIATION

The Walter Gerlach Show Board of Directors wishes to express a great big “Thank You” to the families of William (“Billy”) Springer and Adolph (“Buddy”) Jung. These two former directors may have departed but their hard work and dedication to the show and sale have benefited 4H and FFA exhibitors, past and present.

### William (“Billy”) Springer

Billy served as Director and President in the 1970’s. As President, he helped to establish a long term financial plan that would ensure the shows sustainability in future years. His children Casey, Scott and Peggy attended John Marshall High School and were members of the John Marshall FFA. They exhibited steers and swine. Later, his granddaughter Brittany, a member of the O’Connor FFA, exhibited goats. He is survived by his wife, Joyce.



### Adolph (“Buddy”) Jung



Buddy served as Director and Lamb Superintendent of the Walter Gerlach Livestock Show in the 1980’s. He made sure that the lamb pens and show arena were ready for all the exhibitors. His two children, Steven and Donna, showed lambs and turkeys. He is survived by his wife, Ruth.



CONGRATULATIONS ON YOUR  
42nd ANNIVERSARY!

WE JOIN YOU IN  
SUPPORTING OUR YOUTH!!!

### WE DELIVER!

Holiday Parties  
Business  
Luncheons  
Family Reunions  
Graduations



210-653-RUDY (7839)

**LOCATED AT:**  
8910 Bandera Road,  
Suite 212  
San Antonio, TX 78250  
210.521.3700

**BUY ONE, GET ONE  
FREE!**

Buy one Bahama Buck's® Shaved Ice and get one the same size or smaller **FREE!**

Limit one coupon per customer per visit. Ice Cream, Tropic Crème, and Bahama Rama Mama extra. May not be combined with any other coupon, discount, or promotion. Offer only valid at participating locations. Offer expires 06/01/15.

LIKE US ON FACEBOOK!  
[WWW.BAHAMABUCKS.COM](http://WWW.BAHAMABUCKS.COM)



"Living a Texas Tradition"

Helotes 4H  
President

Maggie Louton



"Living a Texas Tradition" is more than just a motto, it's a way of life. Everyday I work hard to make sure that showing livestock and producing food for everyone around me is done to the best of my ability, I try everyday to make this big tradition proud and unforgotten. Thank you for your support of me, and other youth on this journey with me. So as I approach my last two years in this amazing show industry I want everyone to know that I wouldn't want to show or do anything else and I am so proud to be what is called MJLS....Maggie



## 2014 GRAND CHAMPION STEER

Exhibitor: Courtney Stone

Amount: \$15,000

(RECORD: \$20,000 - 2008)



*\*Belt Buckle Sponsor: Gary & Madelyn Schott*

### Buyers:

San Antonio Masonry & Tool Supply  
Rick Stone Masonry  
I-10 Stone Source  
Karl Wanke  
Bar KR Farms  
MTR Engineers  
Cude Engineers  
PBK Architects  
Broadway Bank  
Comerica Bank  
Nextgen Architects  
Clearly Zimmermann Engineers  
Hyatt Hill Country Resort

## 2014 RESERVE GRAND CHAMPION STEER

Exhibitor: Hayley Fleming

Amount: \$7,150



*\*Belt Buckle Sponsor: The Harmon Family (Randy & Charla)*

\*\*\*This page is generously sponsored by Frost Bank\*\*\*

210-220-6922

[www.frostbank.com](http://www.frostbank.com)





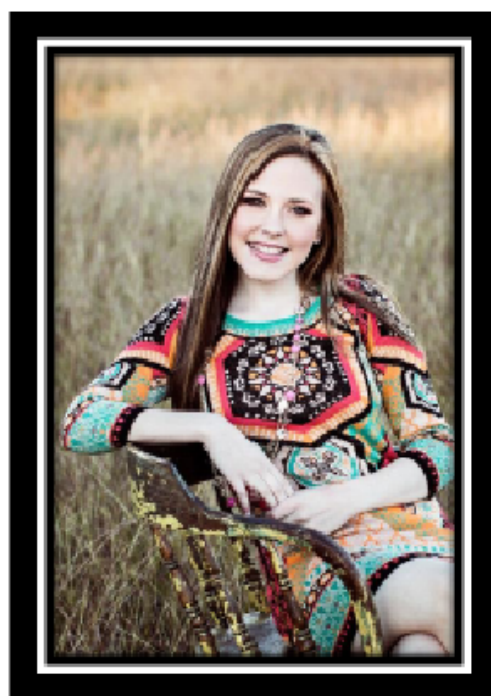
**Madison DeWinne**

**Sandra Day O'Connor- Class of 2015**

Madison,

We can't believe your childhood has seemingly flown by. Here we are at your last Walter Gerlach Livestock Show. As you prepare for your next chapter in life, we look back to all the wonderful memories we made as a family working with you and your animals. We are so proud of all you have accomplished in 4H and FFA, and how it has shaped the wonderful person you have become. We Love You! Love. Mom & Dad

**GOOD LUCK MADISON!**



## 2014 GRAND CHAMPION SWINE

Exhibitor: Katelynn Sullaway

Amount: \$7,000

(RECORD: \$11,700 – 2012)



### Buyers:

Comerica Bank  
Frost Bank  
Hyatt Hill Country Resort  
Quality Roofing  
MTR Engineers  
H.E.B.  
Lonestar PBR  
ADS Security  
Cude Engineers  
PBK Architects  
Nextgen Architects  
Clearly Zimmermann Engineers

*\*Belt Buckle Sponsor: The Ed Kariger Family (Linda)*

## 2014 RESERVE GRAND CHAMPION SWINE

Exhibitor: Lauryn Moos

Amount: \$6,700



*\*Belt Buckle Sponsor: Galm Real Estate (Butch & Cindy Galm)*



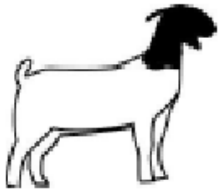
\*\*\*This page is generously sponsored by

Grand Slam Swine Genetics\*\*\*

Call Willie, Edmund or Todd for your showing needs, 210-355-3216



# Best Friends In and Out of the Ring



Helotes

Zoey Zule



Class of 2017



Darcy Loessberg



Good Luck Courtney!  
We are proud of you!

Love, Mom, Dad and Alexis



Helotes

## 2014 GRAND CHAMPION LAMB

Exhibitor: Jenna Hunt

Amount: \$6,400

(RECORD: \$8,200 – 2013)



### Buyers:

Far South Mining  
Machinery Auctioneers  
Hyatt Hill Country Resort  
MTR Engineers  
Cude Engineers  
PBK Architects  
Nextgen Architects  
Marmon Mok LLP

*\*Belt Buckle Sponsor: M'Lissa Chumbley*

## 2014 RESERVE GRAND CHAMPION LAMB

Exhibitor: Allyssa Hall

Amount: \$3,000



*\*Belt Buckle Sponsor: The Meier Family (Edmund & Susan)*

\*\*\*This page is generously sponsored by the NISD Board of Trustees\*\*\*

Superintendent Brian Woods, Robert Blount Jr., Katie Reed, Bennie Cole,  
George Lynn Britton Jr., M'Lissa Chumbley, Carol Harle, Karen Freeman

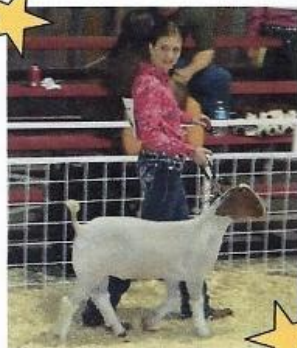




•Brittney•

Helotes 

•Krista•





## 2014 GRAND CHAMPION GOAT

Exhibitor: Hailey Burnett

Amount: \$11,350 (RECORD)



### Buyers:

Franklin Construction  
South Texas Associates  
Rudy's Country Store & BBQ  
Tim & Christy Louton  
Anderson Law Firm  
Correct Weight Scale  
PBK Architects  
Noonan Rittimann Architects  
Nextgen Architects  
H.E.B.

*\*Belt Buckle Sponsor: The Louton Family (Tim & Christy)*

## 2014 RESERVE GRAND CHAMPION GOAT

Exhibitor: Brittney Haby

Amount: \$10,100



*\*Belt Buckle Sponsor: The White Family (Mike & Debbie)*



\*\*\*This page is generously sponsored by 3 Star Livestock\*\*\*

Tim Louton – Casey McDaniel – Mason Louton

Call 210-478-6228 for your show needs.





We are so proud  
of you  
**Sean Wright**

**Good luck at  
Gerlach!!!**

**Love, Papa &  
Grandmom**



**Good Luck  
FFA and 4-H Participants!!!**



**Wright Stuff Photography**  
[www.wrightstuffphotography.com](http://www.wrightstuffphotography.com)



## 2014 GRAND CHAMPION RABBITS

Exhibitor: Blake Wernli

Amount: \$5,000 (RECORD)



### Buyers:

Mike Cude  
Josh Cude  
Lilly Cude  
Galaxy Builders  
Plant Interscapes  
Walmart  
PBK Architects  
Franklin Construction

*\*Belt Buckle Sponsor: The Rathburn Family*

## 2014 RESERVE GRAND CHAMPION RABBITS

Exhibitor: Logan Lusk

Amount: \$2,750



*\*Belt Buckle Sponsor: The Quijano Family (Carlos & Krystal)*

\*\*\*This page is generously sponsored by The Heritage Group\*\*\*

Joey Tomlinson, Vanessa Johnson, Brian Loessberg, Jackie Wanke,

Sandee Maddock, Carolyn Hall, Jimmy Dietz





**Good Luck at  
Gerlach, Briley!**  
**We are proud of  
all that you have  
learned and  
accomplished!**

Love,  
Dad, Mom, & Cade



*Quality Is Our Quest!*

**{210} 22 QUEST**  
**2 2 7 - 8 3 7 8**

[www.QuestPlumbingSA.com](http://www.QuestPlumbingSA.com)



**The Helotes Festival Association**

**wishes everyone at**

**The Walter Gerlach Show**

**Good Luck!**

**Cornival**  
**April 30-May 3**

[www.helotescornival.org](http://www.helotescornival.org)

**"Promoting community good will and preserving the heritage of the Helotes Area"**

## 2014 GRAND CHAMPION TURKEY

Exhibitor: Austin Clay

Amount: \$5,000

(RECORD: \$9,200 – 2008)



*\*Belt Buckle Sponsor: The Horny Family (Tim & Debbie)*

### Buyers:

Civil Engineering Consultants  
Maverick of Texas Construction  
Lone Star AC & Heating  
Walmart  
PBK Architects  
Ella S.A. Contracting  
Nextgen Architects  
Cleary Zimmermann Engineers

## 2014 RESERVE GRAND CHAMPION TURKEY

Exhibitor: Jacob Clay

Amount: \$2,500



*\*Belt Buckle Sponsor: The Schott Family (Leslie & Pam)*

\*\*\*This page is generously sponsored by the O'Connor H.S. Agriculture Science Teachers\*\*\*

Steve Chumbley, Bryan Hawkins, Paul Booth, Wes McFarland, Steve Branecky,

Chase Carroll, Mike Tondre & Farm Manager Scott Maytum



Celebrating Our

**35th Anniversary**

1980 - 2015



**Wishing good luck  
to all exhibitors!**

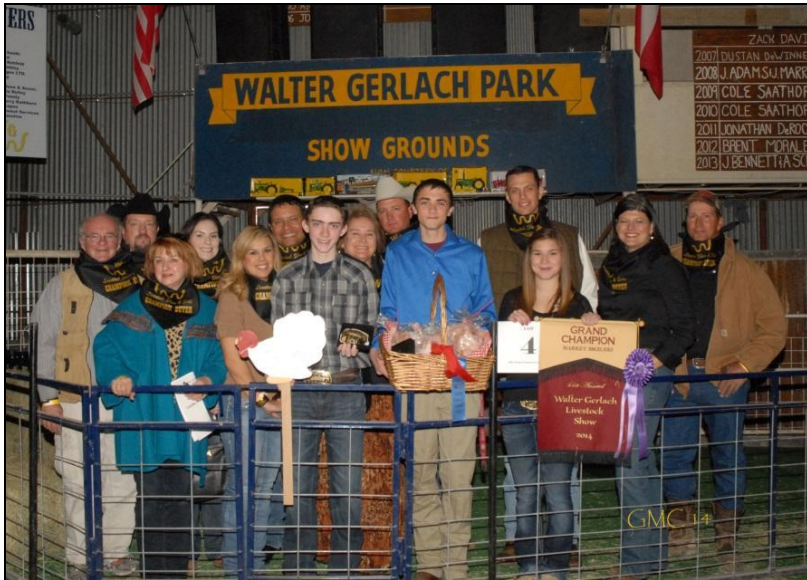
**4727 Golden Quail #105  
San Antonio, TX 78240  
210-691-2351**

## 2014 GRAND CHAMPION BROILERS

Exhibitor: Austin Clay

Amount: \$2,800

(RECORD: \$5,100 – 2011)



### Buyers:

Joeris General Contractors

Crawford Electric Supply

Locke Hill Feed

PBK Architects

M'Lissa Chumbley

*\*Belt Buckle Sponsor: The Beard Family (Tom & Sandi)*

## 2014 RESERVE GRAND CHAMPION BROILERS

Exhibitor: Jacob Clay

Amount: \$2,600



*\*Belt Buckle Sponsor: The Adams Family (Tracy & Kids)*

\*\*\*This page is generously sponsored by the O'Connor High School Administration\*\*\*

Jackie Horras, Principal – Ken Vogel, Vice Principal – Jennifer Bishop, Academic Dean

Cynthia Barrett – Jason Christian – Bonnie Eckhardt – Arnulfo Guajardo



# **P.J. Farm & Ranch Feed Store**

**11585 Galm Road, San Antonio TX 78254 (210)523-5282**

**Monday-Friday: 8:00am to 6:00pm**

**Saturday: 9:00am to 4:00pm**

**Sunday: Call Ahead**



**Call about Automatic Gate Operators**  
**Custom PowderCoating**



## 2014 AG MECHANICS WINNERS



**GRAND CHAMPION**  
**Adan Machuca & Connor Padgett**



**RESERVE GRAND CHAMPION**  
**Elliot Heine**

### 2014 C.E. VICKERY AWARD

**Winner:**  
**Bailee Kilgore**

**Runners Up:**  
**Abby Snyder**  
**Jaclynn Brown**  
**Michaela Willms**  
**Adan Machuca**  
**Jake Murry**



**\*Belt Buckle Sponsor: WGLS Board of Directors**

*This award was established in 1985 by the Board of Directors who wanted to honor Mr. Vickery for his tremendous influence on students. Mr. Vickery made all his students aware that they should try for the Grand Champion and that, while everyone might not have the grand champion animal, all exhibitors could make the grand champion effort. The directors decided that the show would make a presentation to a student who exemplified the traits of a successful stockman and animal exhibitor. Integrity, honesty, good work ethic, involvement and cooperation with the other exhibitors and show officials determine the winner each year. Students are encouraged to get an application for the C.E. Vickery Award. Applications are accepted during the Gerlach Show.*

**\*\*\*This page is generously sponsored by Rick Tarbell/Financial Advisor\*\*\***

**Ameriprise Financial**  
**10010 San Pedro Ave, Suite 100**  
**San Antonio, TX**  
**(210) 530-0651**



## **Grey Forest Utilities**

wishes good luck to all  
the exhibitors and  
thanks all sponsors for  
their support!



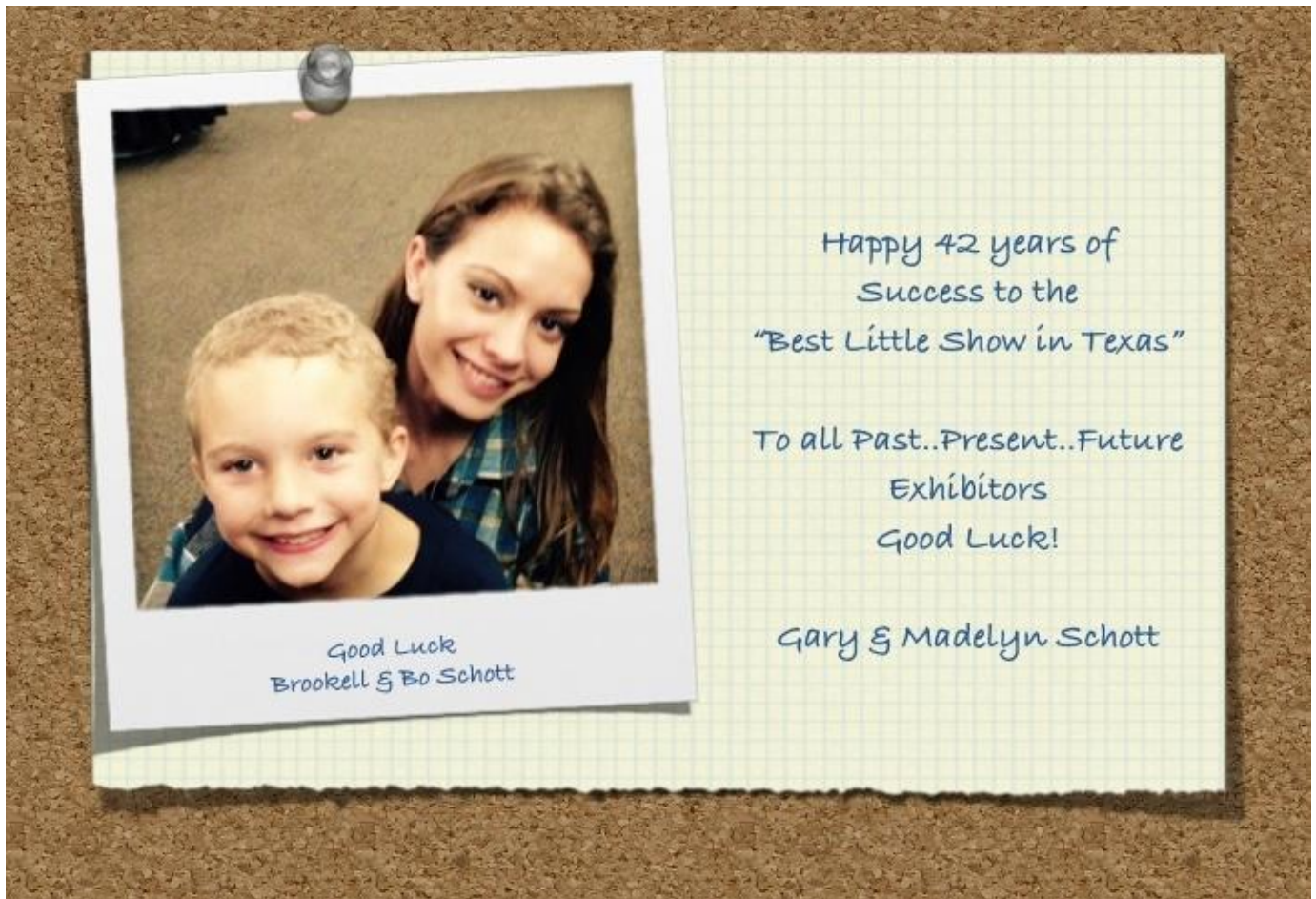
**Jupe Mills**

(210) 695-3551  
14096 Bandera Road  
Helotes, TX 78023



**Good Luck  
at the  
Walter Gerlach Show!**





## 2014 SHOWMANSHIP WINNERS



### Senior Showmanship:

Hollie Mair  
Jenna Hunt  
Marisa Garcia  
Emily Pierce  
Jake Murry

### Junior Showmanship:

Courtney Wanke  
Barrett Hunt  
Brittney Haby  
Victoria Weynand  
Maggie Beard

**\*Belt Buckle Sponsors: The Kidder Family (Chuck & Patty), The Sandera Family (Robert & Frances), The Dewinne Family (Ernie & Debbie), The Newman Family (Eric & Ann), The Flores Family (Carlos & Judy), The Lutz Family (Nathan & Karen), John Gains, The Willms Family (Gordon & MaryAnn), Bendele Enterprises (Ben Bendele), The Schuh Family (Ronnie & Brenda)**

**Livestock Judging Winner Buckle: The Stricklin Family (Robert & Crystal)**

## 2014 SCHOLARSHIP RECIPIENTS



Cha-Cha Jackson, Adan Machuca, Hollie Mair, Connor Padgett, Sarah Rodgers, Kate Wright  
Bailee Kilgore, Abby Snyder, Courtney Vaughn, Lexi Wanke, Sarianna Vale

World-Class Technology Solutions



Intech  
Southwest  
Services™

[www.intechsouthwest.com](http://www.intechsouthwest.com)

(210) 690-0000 (210) 690-0200 Fax

Good Luck to all participants at the Gerlach Show!

From Intech Southwest





# Helotes 4H



Livestock

Vet Science

Shotgun

Sports Fishing

Public Speaking

Photography

Wildlife

Arts and Crafts

Gardening and Horticulture

Archery

Food and Nutrition

Clothing and Textiles

Horses

Riflery

Dog Training

## Helotes 4H LSO

Christy Louton  
[clouton@att.net](mailto:clouton@att.net)  
210-413-7169

Jackie Wanke  
[jackiewanke@gmail.com](mailto:jackiewanke@gmail.com)  
210-861-1361

Lisa Brieger  
[irishlisa@sbcglobal.net](mailto:irishlisa@sbcglobal.net)  
210-823-3147

Meets the 2nd Monday of the month

## Helotes 4H LSP

Debbie DeWinne  
[ddewinne@aol.com](mailto:ddewinne@aol.com)  
210-287-5296

Amie Olivarez  
[amieolivarez@yahoo.com](mailto:amieolivarez@yahoo.com)  
210-445-9102

Meets the 1st Monday of the month

## Helotes 4H Unlimited

Tammy Carpenter  
[Tcarp1967@gmail.com](mailto:Tcarp1967@gmail.com)  
210-215-6744

Florence Stone  
[acpstone@yahoo.com](mailto:acpstone@yahoo.com)  
210-218-9430

Meets the 2nd Thursday of the month

"To Make The Best Better"

Good Luck  
Bradly Mahula!  
Love, Mom



**Nancy Muldoon**

REALTOR®, GRI, ABR, SRES

direct 210.844.2834

fax 210.638.7423

nmuldoon@kw.com



## OUR ROOTS ALSO RUN DEEP IN TEXAS.

Frost is proud to support The Walter Gerlach Livestock Show.  
And we'd be proud to help you along your financial journey too.

[frostbank.com](http://frostbank.com)

11555 Bandera Rd

San Antonio, TX 78250

(210) 220-6922

MEMBER FDIC



## Lutz Insurance Agency

*Helotes' Full Service Agency*

Life~Home~Auto~Annuities~Business

**210-787-5190**

[J.Lutz@American-National.com](mailto:J.Lutz@American-National.com)

14743 Old Bandera Rd. Helotes, TX

THANK YOU to all the buyers for your  
support of this great Gerlach show &  
tomorrow's leaders!

OC FFA Class of '06

# Good Luck to all of the 2015 Walter Gerlach Livestock Show Participants!

Thank you to all buyers, participants,  
directors, volunteers and parents for  
making this the:

"Best Little Show in Texas!"



Helotes Ag Activity Center  
12132 Leslie Road  
Helotes, TX 78023  
Hall Available for Rent  
210-695-5572



## Come Join the Fun at Helotes 4H!

[www.Helotes4H.org](http://www.Helotes4H.org)



## APPENDIX: Index of Advertisements

3 Star Livestock.....	Page 15
.....	
Ameriprise Financial.....	Page 23
.....	
Bahama Bucks.....	Page 8
.....	
Burkholder A/C & Heating.....	Page 6
Dempsey Wealth Management, LLC.....	Back Cover
DeWinne, Madison.....	Page 10
.....	
Frost Bank.....	Page 28
.....	
Galm Real Estate.....	Page 4
.....	
Grand Slam Swine Genetics.....	Page 11
Haby, Brittney & Krista.....	Page 14
.	
Grey Forest Utilities.....	Page 24
.....	
Helotes Ag Boosters.....	Page 29
.....	
Helotes 4-H.....	Page 27
.....	
Helotes Festival Association.....	Page 18
The Heritage Group (Gerlach Catalog Publishers).....	Page 17
Intech Southwest Services.....	Page 26
Jupe Mills.....	Page 24
.....	
Locke Hill Feed, Pet & Lawn Supply.....	Page 20

Loessberg, Darcy & Zoey	Page 12
Zule.....	
Louton,	Page 8
Maggie.....	
.....	
Lutz Insurance	Page 28
Agency.....	
.....	
O'Connor High School Ag	Page 19
Teachers.....	
O'Connor High School	Page 21
Administration.....	
MG Building	Inside Back Cover
Materials.....	
.....	
Mahula,	Page 28
Bradly.....	
.....	
Muldoon,	Page 28
Nancy.....	
.....	
NISD Board of	Page 13
Trustees.....	
.....	
Plant	Inside Front Cover
Interscapes.....	
.....	
PJ's Farm & Ranch Feed	Page 22
Store.....	
Quest	Page 18
Plumbing.....	
.....	
Rudy's Country Store &	Page 8
BBQ.....	
Schott, Gary &	Page 24
Madelyn.....	
.....	
Tarbell, Rick – Financial	Page 21
Advisor.....	
W Dental	Page 2
Group.....	
.....	
Wanke,	Page 12
Courtney.....	
.....	
Wright Stuff	Page 16
Photography.....	
.....	





## AUCTION NOTES

Lot #	Notes	Lot #	Notes	Lot #	Notes
1		54		107	
2		55		108	
3		56		109	
4		57		110	
5		58		111	
6		59		112	
7		60		113	
8		61		114	
9		62		115	
10		63		116	
11		64		117	
12		65		118	
13		66		119	
14		67		120	
15		68		121	
16		69		122	
17		70		123	
18		71		124	
19		72		125	
20		73		126	
21		74		127	
22		75		128	
23		76		129	
24		77		130	
25		78		131	
26		79		132	
27		80		133	
28		81		134	
29		82		135	
30		83		136	
31		84		137	
32		85		138	
33		86		139	
34		87		140	
35		88		141	
36		89		142	
37		90		143	
38		91		144	
39		92		145	
40		93		146	
41		94		147	
42		95		148	
43		96		149	
44		97		150	
45		98		151	
46		99		152	
47		100		153	
48		101		154	
49		102		155	
50		103		156	
51		104		157	
52		105		158	
53		106		159	

## AUCTION NOTES



Lot #	Notes	Lot #	Notes	Lot #	Notes
160		213		266	
161		214		267	
162		215		268	
163		216		269	
164		217		270	
165		218		271	
166		219		272	
167		220		273	
168		221		274	
169		222		275	
170		223		276	
171		224		277	
172		225		278	
173		226		279	
174		227		280	
175		228		281	
176		229		282	
177		230		283	
178		231		284	
179		232		285	
180		233		286	
181		234		287	
182		235		288	
183		236		289	
184		237		290	
185		238		291	
186		239		292	
187		240		293	
188		241		294	
189		242		295	
190		243		296	
191		244		297	
192		245		298	
193		246		299	
194		247		300	
195		248		301	
196		249		302	
197		250		303	
198		251		304	
199		252		305	
200		253		306	
201		254		307	
202		255		308	
203		256		309	
204		257		310	
205		258		311	
206		259		312	
207		260		313	
208		261		314	
209		262		315	
210		263		316	
211		264		317	
212		265		318	



***SUPPORTING YOUTH SINCE 1972!***



**BUILDING  
MATERIALS**

**WHOLESALE / RETAIL**

**(Se Habla Español)**

**[www.mgbuildingmaterials.com](http://www.mgbuildingmaterials.com)**

***HERE FOR ALL YOUR  
BUILDING NEEDS:***

**LUMBER  
ROOFING MATERIALS  
LAWN & GARDEN  
PLYWOOD  
HARDWARE  
DOORS & WINDOWS  
ELECTRICAL SUPPLIES  
LIGHT FIXTURES  
PANELING  
TOOLS & PAINT**



**GROTHUES  
FINANCIAL, LTD  
INTERIM LENDING**

**(210) 824-3180**



**MORTGAGE**

**(210) 930-5572**



**VISA**



**SERVING SAN ANTONIO AND SOUTH TEXAS**

***WITH LOCATIONS IN:***

**SAN ANTONIO  
(210) 924-5131**

**PLEASANTON  
(830) 569-2543**

**CORPUS CHRISTI  
(361) 884-9811**

**KERRVILLE  
(830) 257-2300**

**UVALDE  
(830) 278-4439**



THE SANDRA DAY O'CONNOR FFA CHAPTER  
WISHES TO CONGRATULATE THE  
WALTER GERLACH LIVESTOCK SHOW  
FOR 42 GREAT YEARS



ADVERTISEMENT PROVIDED BY  
**DEMPSEY WEALTH MANAGEMENT, LLC**  
INDEPENDENT ADVICE, PLANNING & APPLICATION

[www.dempseywealthmanagement.com](http://www.dempseywealthmanagement.com)

Patrick Dempsey, CFP®

8814 Warley Heights, San Antonio, TX 78254

Securities and Advisory Services offered through Commonwealth Financial Network®, Member FINRA/SIPC, a Registered Investment Advisor

